
Report To:	Health and Social Care Committee	Date:	25th February 2016
Report By:	Brian Moore Corporate Director (Chief Officer) Inverclyde Health and Social Care Partnership (HSCP)	Report No:	SW/11/2016/BC
Contact Officer:	Beth Culshaw Head of Health and Community Care	Contact No:	01475 715283
Subject:	Delayed Discharge Performance		

1.0 PURPOSE

- 1.1 The purpose of this report is to advise the Health and Social Care Committee of Inverclyde's performance in relation to Delayed Discharges.

2.0 SUMMARY

- 2.1 The Delayed Discharge target reduced from 4 weeks to 2 weeks from April 2015. Across Scotland, performance against this target has largely been improving. This report reviews local performance in the context of 3 key areas:-

- Performance within NHS Greater Glasgow and Clyde;
- Performance during the initial winter phase, including the festive period; and
- Considering recent national reports, highlighting the impact of waiting for social care.

3.0 RECOMMENDATIONS

- 3.1 Members are asked to note current performance in relation to Delayed Discharges.

**Brian Moore
Corporate Director
(Chief Officer)
Inverclyde HSCP**

4.0 BACKGROUND

4.1 Performance in relation to Delayed Discharges is multi-functional, influenced by a range of drivers both within and outside our control. Often over the winter period increased emergency admissions, combined with the impact of festive factors, can challenge our ability to maintain consistent performances. Detailed planning across services is undertaken to minimise this risk.

5.0 PERFORMANCE

5.1 Performance within NHS Greater Glasgow and Clyde

Performance in relation to Older People's Services within the Health Board is routinely monitored in a number of ways. In recognition that the impact of Delayed Discharges on the overall system is predominantly as a result of the resources consumed, Bed Days Lost to Delayed Discharges (including AWI) are routinely collated. Current Health Board targets for each Partnership are set as a proportion of 2009/10 performance, at 50% and 75% of Bed Days Lost. Appendix A details current performance; it is of note that Inverclyde continues to sustain and improve upon performance, particularly given the relatively low starting point in 2009/10. In 2015/16 to date we have seen improvements achieved across the Health Board area on the whole, although some areas continue to experience challenges in relation to Adults with Incapacity (AWI).

Performance is also measured in relation to trends in emergency admissions, for both over 65s and over 75s; Appendices B and C illustrate recent performance for both Inverclyde and NHS Greater Glasgow and Clyde as a whole.

5.2 Festive Activity

As previously reported to committee, close working between hospital and community services is pivotal to achieve effective outcomes for service users. In preparation for winter, detailed plans were developed across services, to not only manage services but also to ensure that effective communication systems highlighted any emergency pressures, triggering remedial action as required.

6 week comparison – Inverclyde Royal Hospital

2014/15							
	14/12	21/12	28/12	4/1	11/1	18/1	
New A & E attendances	567	570	529	610	559	523	
4 hour A & E compliance	80%	85%	92%	85%	87%	89%	
Delayed patients at end of week	26	21	18	20	20	31	

2015/16							
	13/12	20/12	27/12	3/1	10/1	17/1	
New A & E attendances	595	578	551	574	612	597	
4 hour A & E compliance	91%	91%	92%	91%	95%	95%	
Delayed patients at end of week	11	10	3	5	16	11	

Please note Delayed patients at the end of the week are for Inverclyde Royal Hospital and therefore include North Ayrshire and Argyll and Bute as well as Inverclyde residents.

Performance at this stage of the winter reflects an improving achievement of the 4 hour target for the hospital against a slight increase in activity and considerable reduction in Delayed Discharges.

5.3 Waiting for Social Care

In recent weeks there has been national press coverage in relation to people dying whilst awaiting social care, either as a Delayed Discharge or at home. By the very nature of the Delayed Discharge client group, and the frailty of individuals, this risk will remain. Over the past year no Delayed Discharge in Inverclyde has been as a result of a delay in funding.

6.0 IMPLICATIONS

Finance

- 6.1 There are no specific financial implications from this report. All activity will be contained within existing budgets.

Cost Centre	Budget Heading	Budget Years	Proposed Spend this Report £000	Virement From	Other Comments
N/A					

Annually Recurring Costs/ (Savings)

Cost Centre	Budget Heading	With Effect from	Annual Net Impact £000	Virement From (If Applicable)	Other Comments
N/A					

Legal

- 6.2 None.

Human Resources

- 6.3 There are no Human Resource implications at this time.

Equalities

- 6.4 Has an Equality Impact Assessment been carried out?

	YES (see attached appendix)
√	NO -

Repopulation

6.5 None.

7.0 CONSULTATIONS

7.1 None.

8.0 BACKGROUND PAPERS

8.1 None.

Appendix A - Bed Days Summary report

Older People's Bed Days Lost to Delayed Discharge Monthly Monitoring Report - November 2015

Bed Days Lost to Delayed Discharge (inc AWIs) - Acute

(patients aged 65 & over on day of admission)

CH(C)P	2009/10	2010/11	2011/12	2012/13	2013/14	2014/15	2015/16						2015/16			2015/16					
							Apr Actual	May Actual	June Actual	July Actual	Aug Actual	Sept Actual	Oct Actual	Nov Actual	Nov 50% Target	Nov 75% Indicator	Cumulative Actual 2015/16	Cumulative 50% Target	Cumulative 75% Indicator	2015/16 Yr End Forecast	2015/16 Yr End Target
East Dunbartonshire	7,359	6,883	6370	5534	2686	4,916	462	458	287	308	216	146	283	254	307	153	2,414	2,453	1,227	3708	3680
East Renfrewshire	4,829	4,799	4,093	5171	2445	2,896	164	84	112	100	155	105	163	170	201	101	1,053	1,610	805	1512	2415
Glasgow City	53,110	56,635	64,865	43,185	39,929	38,152	2204	2106	1513	1571	1668	1417	1563	1484	2,213	1,106	13,526	17,703	8,852	20640	26555
Inverclyde	6,724	5,497	5578	3744	3010	3,462	138	97	80	142	167	192	116	99	280	140	1,031	2,241	1,121	1596	3362
Renfrewshire	16,207	14,319	19792	12,698	5835	5,325	529	482	436	423	284	262	198	172	675	338	2,786	5,402	2,701	4476	8104
West Dunbartonshire	7,638	8,644	8611	6050	4925	5,802	396	284	230	263	242	157	219	187	318	159	1,978	2,546	1,273	3072	3819
GGC(All above areas)	95,867	96,777	109,309	76,382	58,830	60,553	3,893	3,511	2,658	2,807	2,732	2,279	2,542	2,366	3,994	1,997	22,788	31,956	15,978	35004	47934
North Lanarkshire			1,561	793	677	1,244	104	89	83	117	100	168	159	56			820			1404	
South Lanarkshire			4,101	3,922	4851	5,812	301	383	329	295	355	255	252	249			2,170			3612	
All other areas			2,042	2,288	2,985	3,750	267	330	229	167	223	158	180	225			1,554			2664	
All area's			117,013	83,385	67,343	71,359	4,565	4,313	3,299	3,386	3,410	2,860	3,133	2,896	3,994	1,997	27,332	31,956	15,978	68473	81256

Bed Days Lost to Delayed Discharge for AWIs - Acute

(patients aged 65 & over on day of admission)

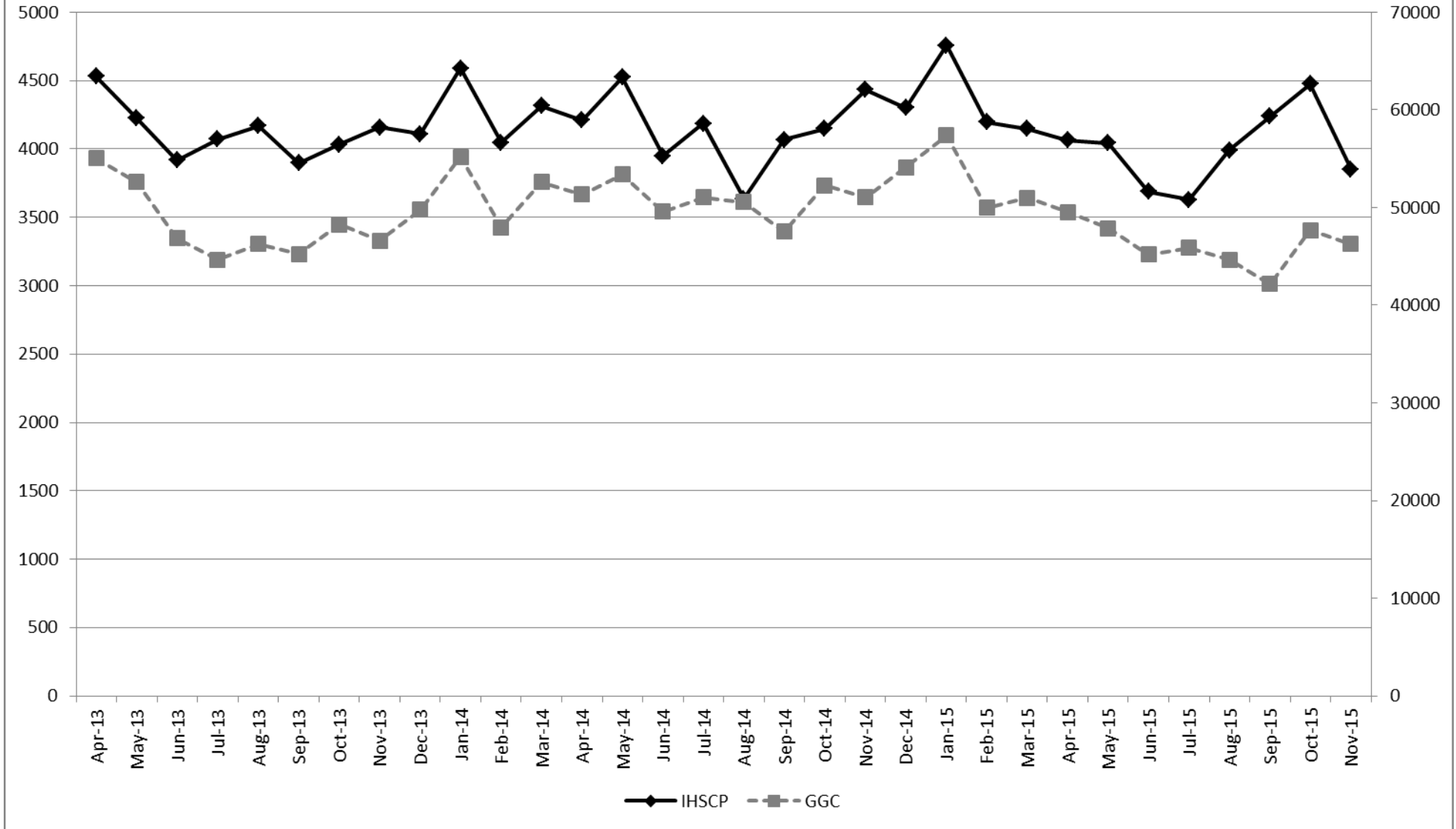
CH(C)P	2009/10	2010/11	2011/12	2012/13	2013/14	2014/15	2015/16						2015/16			2015/16					
							Apr Actual	May Actual	June Actual	July Actual	Aug Actual	Sept Actual	Oct Actual	Nov Actual	Nov 50% Target	Nov 75% Indicator	Cumulative Actual 2015/16	Cumulative 50% Target	Cumulative 75% Indicator	2015/16 Yr End Forecast	2015/16 Yr End Target
East Dunbartonshire	3,200	2,075	1351	63	15	1,185	210	154	63	62	36	30	31	0	133	67	586	1,067	533	7032	1600
East Renfrewshire	1,219	829	60	386	31	213	0	0	7	31	19	30	61	60	51	25	208	406	203	252	610
Glasgow City	18,704	13,319	19,188	9,341	8,936	8,987	556	638	752	890	1033	831	811	751	779	390	6,262	6,235	3,117	9444	9352
Inverclyde	300	582	352	53	108	31	0	0	0	0	0	0	0	0	13	6	0	100	50	0	150
Renfrewshire	2,128	1,190	1647	2,050	2288	4,301	351	402	321	370	217	180	148	131	89	44	2,120	709	355	3408	1064
West Dunbartonshire	931	3,160	1798	1,872	1547	2,127	124	93	111	137	120	82	153	128	39	19	948	310	155	1404	466
GGC(All above areas)	26,482	21,155	24396	13,765	12,925	16,844	1,241	1,287	1,254	1,490	1,425	1,153	1,204	1,070	1,103	552	10,124	8,827	4,414	15516	13241
North Lanarkshire			0	0	0	90	30	31	30	60	23	0	0	0	0	0	174			300	
South Lanarkshire			756	268	975	1,188	91	111	60	8	0	0	0	0	0	0	270			468	
All other area's			322	385	365	634	5	0	0	0	0	0	0	0	0	0	5			60	
All area's			25,474	14,418	14,265	18,756	1,367	1,429	1,344	1,558	1,448	1,153	1,204	1,070	1,103	552	10,573	8,827	4,414	16344	13241

AWI identified by code "51X"

Edison extract as at 29th December 2015

Appendix B – Unplanned Acute Bed Days 65+

Unplanned Acute Bed Days 65+ - Inverclyde HSCP and GG&C (GG&C data aligned to 2nd Y Axis)



Appendix C – Unplanned Acute Bed Days 75+

